



PORT OF CALL

The newsletter that keeps Port's retirees connected and informed.

**PWTA RETIRED EDUCATORS CHAPTER
PORT WASHINGTON, NEW YORK
SEPTEMBER 2013**

VOL.23 NO.3

NYSUT NO. 19 080R Visit our website at: www.pwta.us/PWRE/ AFT NO. 9591-R

Welcoming Our New Retirees!



The PWRE annual "We Don't Have to Go Back to School Breakfast" is a time for Port Washington's retirees, both "old" and "new" to celebrate that we no longer have to follow a pre-determined schedule each day but can choose how and with whom we will spend our time.



On September 3rd, those new retirees who attended were welcomed by Elaine Berman, our PWRE president, and many of their former colleagues. We all enjoyed breakfast at the Fish-KeBab Restaurant in Port Washington.



During the breakfast, Elaine updated us on important retiree issues and Penny D'Antonio, our treasurer, gave her annual PWRE financial report.



Welcome to These Retirees Whose Names Were Not Included in the June Issue

**John Placella, Evie Garofalo,
Susan O'Donnell and Senka Kasap**



Penny gave her financial report.



Elaine spoke of important issues.



STAY CONNECTED! TAKE A STAND! GET INVOLVED!

From the Desk Of
Our President



Elaine Berman

PLEASE KEEP IN MIND...

Contributions to the PWTA Scholarship Foundation are always welcome. They are a good way for us to fund-raise, for you to take as a tax-deductible contribution, and for some worthy student or students each year to benefit from a gift from us for

his/her college education.

REMINDER- Do not to contribute to NYSTRA. This organization is not connected to NYSUT in any way and does not represent us.

IMPORTANT CAVEAT RE HOSPITAL ADMISSIONS

If you enter a hospital, be sure your stay is designated as an admission, not as an observation. Medicare recipients who require additional care after hospitalization for at least three days are entitled to a 20-day stay for follow-up care in a nursing facility. However, if you are admitted as a patient in for observation, Medicare will not pay for follow-up care. So - check your hospital admission papers carefully to make sure you have been classified as an admitted patient; if necessary, have your doctor so declare, or - if you still have an issue - contact the Medicare Rights Center (www.medicarerights.org).

POLITICALLY SPEAKING . . .

(ABA - always be active! Stay informed on legislation and legislators; contact them when you have something positive or negative to say!)

OPPOSE CHAINED CPI!

CPI is a "back door way of trying to balance the budget on the backs of America's seniors." (Alliance for Retired Americans) If this is enacted, according to Social Security information, it would mean an immediate benefit cut - e.g., an average senior retiring in 2011 at age 65 would lose \$6000 over 15 years, and by age 95 suffer a \$28,000 loss! A chained CPI formula assumes that consumers substitute cheaper products when prices go up, thereby reflected in a lower COLA; however, as seniors age

the percentage of their budget spent on medical expenses goes up, health care costs consuming a large portion of senior income - and these costs cannot be replaced by a cheaper version. Therefore, under chained CPI, big lifetime losses in benefits would result for the average Social Security beneficiary.

WHAT CAN YOU DO?

For openers, log on to NYSUT.org/MAC and/or ARA (Alliance for Retired Americans) to sign petitions, send FAXes; call or contact your Congressman urging support for the Cicilline Bill in the House which opposes the use of Chained CPI to calculate COLAs (1-877-327-8670); call the White House (1-202-456-1414); also, urge support for Sen. Harkins' Bill Strengthening the Social Security Act, S567) which would increase the COLA to require a Consumer Price Index for the elderly actually reflecting costs for Social Security beneficiaries, and would strengthen the Social Security Trust Fund. **(Remember - ALWAYS BE ACTIVE!)**

TAX CAP - SUPERMAJORITYYY VOTE HIGHLY UNDEMOCRATIC!!!

In the May 2013 School Budget vote, our neighboring Manhasset School District attempted to pierce the 2% cap. Had a simple 50% majority ruled, as it does for other elections - including the election of legislators - the budget would have passed. Given the need for a 60% super-majority vote, the minority 46.7% won. (N.B. The budget in E. Quogue asking for a tax cap override failed with a 59.2% "YES to the proposed budget" vote.)

If you agree that this is NOT the democratic American way we should be conducting votes, please do let your State Senator and Governor hear from you.

HOW MUCH DO YOU KNOW?

Take the Medicare quiz (<http://quiz.kff.org/medicare/medicare-quiz.aspx>) to see what you know about Medicare, whom it serves, its benefits, etc. This was prepared by The Kaiser Family Foundation. Answers provided.

Elaine



Come to the P.W.R.E. Book Club

Date: October 2, 2013
Time: 10:00 a.m.
Book: *Art of Hearing Heartbeats*
Author: Jan-Philipp Sendker
Where: Joyce Shapiro's home

and

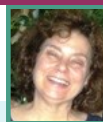
Date: November 21, 2013
Time: 12:00 p.m. (It will be a lunch meeting.)
Book: *End of Your Life Book Club*
Author: Will Schwalbe
Where: Tessa Jordan's home

What's Inside Port of Call September 2013

From the Desk of Our President.....	Page 2
Come to the P.W.R.E. Book Club	Page 2
Port Rowing Team Unofficial Member.....	Page 3
Honoring A Special Man...Lee Aschenbrenner.....	Page 3
Friendship/Remembrance Committee..Joan Gerken.....	Page 3
Merry-Go-Round- "My Year Abroad"	Page 4
Another Displaced Person Helping Out	Page 4
Carol Kratenstein: A Very Talented Lady	Page 5
Self CPR.....	Page 5
P.W.R.E. Scholarship	Page 6
Dates to Remember.....Retirees Get Involved	Page 6
Michelle Schimel (Her views on education)	Page 7

CHAPTER NEWS AND ITEMS OF INTEREST

Port Rowing Team: Unofficial Member *Merry Gilbert*



You may know that my temporary address finds us in an apartment adjacent to East Sheets Creek. My husband recently "went to the dark side" and purchased a motor boat. He has been working tirelessly to get it into the

water. I observed him sanding and varnishing his emergency oars, and was able to comment how lucky we are--we won't be up Sheets Creek without a paddle!

Original Art Exhibit at the Port Washington Library *Rita Auerbach*



From November 1 through December 1, 2013, the Port Washington Public Library will have an exhibit of original art by some of the finest children's book illustrators in the country: Brian Floca, Roxie Munro, Jerry Pinkney, Sergio Ruzzier, Amy Schwartz, Laura Vaccaro Seeger, Bernard Waber, Paulis Waber, and Jane Breskin Zalben.

On November 10, at 1:30 p.m., there will be a panel discussion on the topic, "Past, Present, Future: Insiders

Look at Children's Literature in the 21st Century."

I will be a member of the panel along with a group of distinguished illustrators, editors and librarians. From 3 to 5 that afternoon there will be a reception and book signing, an excellent opportunity to find holiday gifts.

It would be wonderful to see PWRE friends there.

Rita

HONORING A SPECIAL MAN

Lee Aschenbrenner Crosswalk (& Traffic Light) Dedicated

The eagerly awaited traffic light and crosswalk spanning Shore Road from Channel Drive to the front of the Chabad of Port Washington was dedicated in memory of Lee on Sunday, August 4th. Friends and members of Lee's family, as well as local officials, were in attendance.

Rabbi Shalom M. Paltiel of the Chabad said of the commemorative sign on the traffic light, "A home needs a mezuzah on the right side of the entrance as protection and for safety." Facing the Chabad, he continued, "As I cross this street and enter 'my home' I will place my hand upon the sign denoting Lee's name and dedication, where it will serve as a kind of mezuzah to remind us of Lee and the safety this installation provides to so many."

Rabbi Irwin A. Zeplowitz, of the Community Synagogue, where Lee was a member, said, "One who saves a life saves the world, and Lee did this in a profound way his whole life. The rabbis taught that teachers give us 'this world' and the 'world to come,' a sense of meaning and purpose, living with something worth passing on. Lee epitomized that—and so symbolized the importance of life. That is why a crosswalk in his memory is fitting—for it, too, will save countless lives."

Merry Gilbert



FRIENDSHIP/ REMEMBRANCE COMMITTEE

Joan Gerken

Get Well Wishes Were Sent to:

Josephine Stankiewicz
Stella Thymius

Condolences Were Sent to:

The Family of Evangeline Angelo
Ed Conti on the death of his brother Charles
The Family of Diana Telfeyan Gross
The Family of Joan Keyes
Debbie Sellers on the loss of her husband Joe

A \$50 contribution, in memory of each,
has been sent to the
PWRE Scholarship Fund

Evangeline Angelo
Diana Telfeyan Gross
Joan Keyes

Merry-Go-Round by Merry Gilbert

My Year "Abroad"

When I was in college, it was not usual to have a junior year abroad. I am making up for it now, by having a "senior" year abroad.

Over the course of my adult life, I have been to many islands: Nassau, Antiqua, Granada, St. Vincent, Bequia...well, you get the picture.

Since February, I have been visiting a new island, Dodge Island, now called Manhasset Isle. There, I am (hardly) camped out in a lovely duplex, complete with washer/dryer, attached garage, patio, AC, etc. When my friends start to feel sorry for me, they visit, and are sorry no more.

Foraging on my "island" is easy. Close by are Stop & Shop and King Kullen. We haven't started fishing the local waters yet, as the heat and rain of this season have delayed the launch of our boat.

The local topography is very flat so it's easy to explore the lovely bay walk and the tree lined streets of the surrounding neighborhood. Even on hot days, walking in the shade (and, if there's just a slight breeze), listening to the rustle of the leaves is uplifting and calming.

The natives are friendly, too. Those just next door have three lovely children, and we're having fun with the whole family.

I do miss my "mainland" house. When I packed up my winter clothing, I did say a little prayer that I would be unpacking there.

In a sea of uncertainty, I search for omens: as I buy something and check the expiration date, I wonder if November 26th, or December 23rd, or January 12th, plainly printed on the carton or box, will mark my return.



Another Displaced Person Finds A Home

When the son of Pat O'Donnell's landlord decided to move back to Bayville and tear down the house that Pat rented, she needed to find a new home. Her search led her to a cottage on a 15 acre estate in Mill Neck, NY. Here's how Pat describes it.

"My 'back yard' is wondrous!! There are two ponds with ducks, geese (Canadian and domestic) three swans, three foxes, several deer, a blue heron and, every so often, hawks. All share the grounds with me." After hearing Pat's description of her new home, friends couldn't wait to pay her a visit.



Anne and Elsie

Sue, Pat, Ute, Anne, Elsie

HELPING OUT

Elaine and Sue sold tickets at the Cow Neck Historical Society's country fair. There were several PWRE members and a PWTA member, working there.



Photo
Courtesy of
Ute
Johnson

PORT OF CALL

SEPTEMBER 2013 Vol. 23 No. 3

Published by the Retired Educators Chapter

Port Washington Teachers Association

99 Campus Drive

Port Washington, NY 11050

Jean Sellers, Editor

jeansellers2@gmail.com

(808)322-1499

PWRE Webmaster: Barbara Mayer

blmayer3@gmail.com

We Asked To Hear From You...And We Did!



Carol Kratenstein: A Very Talented Lady

From Carol Kratenstein:

Here are pictures of "My Ladies." They are about a foot high by a foot wide. I am having a wonderful time creating in clay and wanted to proudly share them

with my friends. For the past two years I have been taking a sculpting class on Tuesdays. The following pieces are the results of a wonderful teacher who has helped me blossom into a sculptress.

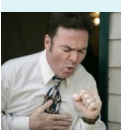


YOU MIGHT NEED TO KNOW!

SELF CPR

Since many people are alone when they suffer a heart attack, this article could save a life.

Without help, the person whose heart is beating improperly and who begins to feel faint has only about 10 seconds left before losing consciousness.



However, these victims can help themselves by coughing repeatedly and very vigorously.

A deep breath should be taken before each cough, and the cough must be deep and prolonged, as when producing sputum, from deep

inside the chest.

A breath and a cough must be repeated about every two seconds without let up until help arrives, or until the heart is felt to be beating normally again.

Deep breaths get oxygen into the lungs and the action of coughing squeezes the heart and keeps the blood circulating.

The squeezing pressure on the heart also helps it regain normal rhythm. In this way, heart attack victims can get to a hospital.

PLEASE NOTE: If you knew exactly what you were doing, this procedure might help save your life. If, however, you were to attempt cough CPR at the wrong time (because you misjudged the kind of cardiac event being experienced) or went about it the wrong way, it could make matters worse.

Who's at Risk for Heart Disease?

Men have a higher risk of having a heart attack than women, and at an earlier age. But it's important to note that heart disease is the No. 1 killer of women, too. People with a family history of heart ailments also have a higher risk of heart trouble.

Keeping Informed and Getting Involved

P.W.R.E. Scholarship

Each year, the PWRE awards a scholarship to a deserving Paul D. Schreiber graduate. This year's candidate was Vincent Baglio. Vincent responded with this letter:



Dear Ms. Elaine Berman,

Now that my senior year has drawn to a close, I am able to devote the time to express my deep gratitude and appreciation for your generosity. In the search for ways to pay for a college education, every dollar counts. The Port Washington Retired Educators Scholarship will go a long way in helping to lessen the financial burden that comes with the cost of a higher education.

In return, I offer my sincere promise to work very hard to achieve my goals and I would hope that in the future I would be able to give back to this community that has served me so well throughout my youth. Your philanthropy is a great example that I would hope to follow.

Sincerely,

Vincent Baglio

Repeating from Elaine's column on page 2:

"Contributions to the PWTA Scholarship Foundation are always welcome. They are a good way for us to fund-raise, for you to take a tax-deductible contribution, and for some worthy student or students each year to benefit from a gift from us for his/her college education."

Dates to Remember

October 2nd Port Washington Public Library: Regent Roger Tilles discusses the issue of New York State's excessive testing.

October 16th The Swan Club: PWTA 25 year party (and Scholarship Foundation fund raiser) Cost-\$55 tax-deductible for PWTA Scholarship Foundation)

October 20th Jones Beach: Making Strides Breast Cancer March.



*How many of you have known someone with cancer? NYSUT'S MAKING STRIDES CAMPAIGN focuses on breast cancer although we know all forms of cancer need support. Please help us make this a **BIG** event. Make a monetary contribution to the American Cancer Society through NYSUT (Give to Sue or Elaine) and walk with us at Jones Beach on October 20th. If each of us gave \$10, it would contribute \$5000 to this important cause.*

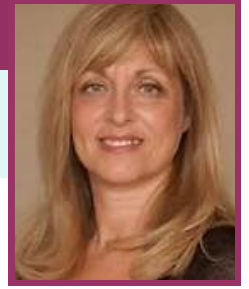
Retirees Get Involved



NYSUT has one of the most active and successful union retiree programs in the country. The NYSUT Retiree Services Program, part of Program Services, was established by NYSUT to help its retirees organize and to act as a service provider for those retiree groups. In an effort to better serve the growing number of retirees, 11 Retiree Services Consultants have been hired to serve members in the field. (Photo courtesy of NYSUT.org)

From Michelle Schimel ...Assembly 16th AD

The following reflection is a good overview of the stance on education supported by our local NYS Assembly member Schimel. I think it is good reading for us. Elaine



My recent visit to the John F. Kennedy Presidential Library reminded me of the optimism a leader can convey by his words and legislation. The papers and exhibits of the JFK Library in Boston offer profound insight into the President's emphasis on the importance of education to the progress of our nation. On page after page, in room after room, it is apparent that the one domestic subject that mattered most to John Kennedy was education. He devoted more effort to this topic than to any other domestic issue.

President Kennedy knew that education enhanced our strength as a nation when he said, "Our progress as a nation can be no swifter than our progress in education. The human mind is our fundamental resource."

JFK also knew the discouraging statistics. During his tenure only six out of every ten students in the fifth grade would finish high school; only nine out of sixteen high school graduates would go to college. Kennedy chose to make this his fight. His basis for change was grounded in optimism and belief in ourselves.

Even in 1962, how to pay for education was a challenge. After meeting with various officials, Kennedy commented, "That's the fifth governor I've talked to who doesn't see how he can squeeze any more from property taxes to build enough schools." Yet the economics did not deter him; he regarded the cost of education as an investment into national purpose and strength. An estimated one-third of all Kennedy program initiatives made some form of education a central element. The Office of Education later called it the most significant legislative period in its hundred-year history.

Sadly, what's significant now is the escalating erosion of JFK's educational policies. At the center of this erosion is the collateral damage of high stakes testing. Today's children are overwhelmed by the pressures of abundant tests. Parents are alarmed by their children's fear, and teachers are overwhelmed by the reality that test scores of anxious children can be the thumbs up or thumbs down to their careers.

Some educators that I meet agree that the Common Core standards may ultimately help students. However, they express a concern regarding the growing reliance on standardized testing and hasty incorporation of the Common Core in the development of these tests. Students have not been exposed to these standards for a sufficient length of time.

The Department of State Education, by not allowing appropriate time and tools to accommodate marked changes in the measures of student performance and teacher effectiveness, the morale of students and educators are in a downward spiral. This is not acceptable. This is in stark contrast to the educational legacy of John Kennedy.

Upon visiting a kindergarten class, I asked a room full of five year olds, "Who can draw?" Every hand in the room shot up. I then asked, "Who can sing?" Once again, every hand went up. By the time those children are in high school, if I asked the same questions, more than likely, only three hands would go up. The years can temper the creative enthusiasm and spirit of children.

I see a worrisome reality, the love of learning and developing our children's greatest abilities through education is at risk. Children must be encouraged to soar in a nurturing and stimulating educational environment. Public schools have been given a monumental task- to fix all that ails our society's youth. They cannot do it alone. If a child comes to school hungry, or if bullets fly when they play outside, tell me how is she or he going to soar? Public education needs a transfusion of love and support. It's not just the money that our public schools want it's the respect. Real educators know that it is not testing and curriculum that allows a child to soar- it is an atmosphere of encouragement and hope.

John F. Kennedy said, "Let us think of education as a means of developing our greatest abilities, because in each of us there is a private hope and dream which, fulfilled, can be translated into benefit for everyone and greater strength for our nation." To be sure, this was meant for the greater strength of New York State as well and we must not lose that promise.



Port Washington Retired Educators Chapter

Meetings will be held on Thursdays at the Port Washington Library on the dates and times listed below, **unless otherwise notified.** **Please check your e-mail or the website for any meeting changes.**
These meetings aren't just for the PWRE officers. All members are welcome to attend.

2013 Meeting Dates

October 31 at 12:30 p.m. (Not a misprint...No other dates or times available.)

November 21 at 10:30 a.m.

December 19th at 10:30 a.m.

Reminder to those wanting Port Of Call "online." There is no need to have it e-mailed to you personally. It is on our website at <http://pwta.us/PWRE/>. If you wish a paper copy, you can just print it from the website.

PLEASE NOTE: Checks for contributions to the PWRE Scholarship Fund should be made out to the PWTA Scholarship Foundation and mailed to the PWTA office at 99 Campus Drive.

PORT WASHINGTON
RETIRED EDUCATORS CHAPTER, PWTA
99 CAMPUS DRIVE
PORT WASHINGTON, NY 11050

PLACE
STAMP
HERE

FORWARD SERVICE REQUESTED

FIRST CLASS MAIL